

# Accessories for Marine Tie



LIBERTY Ostrava  
[www.libertysteelgroup.com](http://www.libertysteelgroup.com)



MEMBER OF



**LIBERTY Ostrava is an integrated steel business with an annual production capacity of approximately 3.6 million tonnes serving construction, machinery and oil & gas industries.**

The company is a domestic leader in the manufacture of road barriers and tubes. In addition to the Czech market, it supplies its products to more than 40 countries around the world. Together with its subsidiaries in Ostrava, the company has 6,000 employees. The company

manufactures its products with a minimum possible environmental footprint. It is part of LIBERTY Steel Group, which is part of GFG Alliance, a collection of global businesses and investments owned by Sanjeev Gupta and his family. The Alliance is structured into three core industrial pillars: LIBERTY Steel Group, ALVANCE Aluminium Group and SIMEC Energy Group. Headquartered in London, GFG Alliance employs 35,000 people, across 10 countries and has revenues of USD \$20bn.

### Liberty Ostrava Facilities

- 3 coke oven batteries
- 5 sinter belts
- 3 blast furnaces (2 operational)
- 4 tandem furnaces
- 3 continuous casting machines
- 6 rolling mills (incl. hot-strip mill, big and small Stiefel pipe mills, wire rod mill, heavy section mill, fine & medium section mill)
- Mine support and road barrier lines

### Main Products

Hot rolled coils, sheets and strips, road barriers, merchant bars and sections, wire rods, tubular steels, mine supports, engineering products, transformer cores, threaded bars, rebars, hot rolled spring steel flat bars

### Key Markets

Construction, machinery and automotive

### Certification

ISO 9001

ISO 14001

OHSAS 18001

ISO 50001



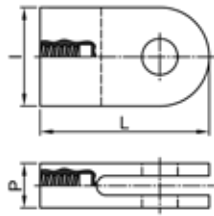
# Marine Tie 500/550 - 550/620

## Sheet Pile Anchorage - Standard Design



### Fork Piece

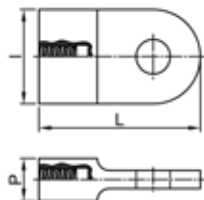
#### L4000



Ø [mm]	Weight [kg]	L [mm]	I [mm]	P [mm]
40L	13.60	140	305	65
50L	39.70	190	445	90
57L	44.60	210	435	100
63L	66.00	230	470	120
75L	94.80	260	510	140

### Eye Piece

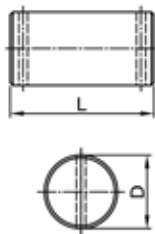
#### L4100



Ø [mm]	Weight [kg]	L [mm]	I [mm]	P [mm]
40L	12.30	140	310	65
50L	36.60	190	450	90
57L	39.50	210	440	100
63L	55.70	230	475	120
75L	77.60	260	525	140

### Bolt Eye Piece

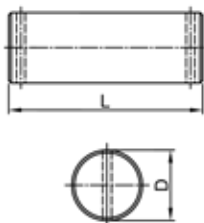
#### L4200



Ø [mm]	Weight [kg]	D [mm]	L [mm]
40L	1.70	50	145
50L	3.64	65	200
57L	5.20	75	170
63L	6.93	80	240
75L	10.30	90	225

### Bolt T-Plates Eye Piece

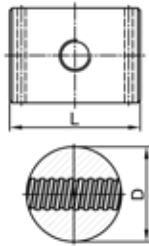
#### L4220



Ø [mm]	Weight [kg]	D [mm]	L [mm]
40L	2.17	50	145
50L	5.07	65	200
57L	5.73	75	170
63L	9.30	80	240
75L	11.05	90	225

## Marine Tie 500/550 - 550/620 continued...

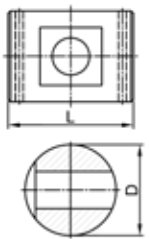
### Joint Nut



#### L4230

Ø [mm]	Weight [kg]	D [mm]	L [mm]
32L	7.30	90	160
40L	13.80	120	170
50L	28.80	160	200
57L	23.80	140	220
63L	33.20	170	230
75L	50.40	180	280

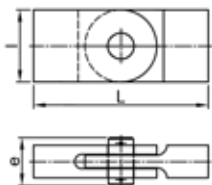
### Joint Bolt



#### L4240

Ø [mm]	Weight [kg]	D [mm]	L [mm]
32L	6.60	90	160
40L	12.60	120	170
50L	26.70	160	200
57L	20.70	140	220
63L	33.00	170	230
75L	44.20	180	280

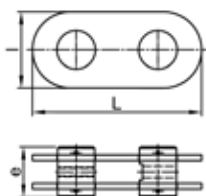
### Clevis



#### L4300

Ø [mm]	Weight [kg]	L [mm]	I [mm]	e [mm]
40L	27.50	445	140	115
50L	79.00	675	190	145
57L	89.30	625	210	155
63L	129.00	675	230	180
75L	182.80	735	260	210

### Hinged Joint

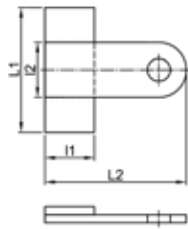


#### L4320

Ø [mm]	Weight [kg]	L [mm]	I [mm]	e [mm]
32L	32.10	500	235	160
40L	69.40	710	310	170
50L	156.00	950	410	200
57L	125.00	780	400	218
63L	234.00	1130	435	230
75L	260.00	1040	485	280

## Marine Tie 500/550 - 550/620 continued...

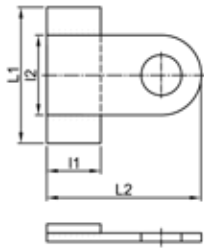
### T-Plate Eye Pieces



### L5100

Ø [mm]	Weight [kg]	I1 [mm]	L1 [mm]	I2 [mm]	L2 [mm]
40L	12.50	120	370	140	390
50L	26.50	140	550	310	490
57L	28.90	140	540	190	460
63L	51.30	180	625	230	550
75L	54.00	180	680	160	580

### T-Plate Joint Nut



### L5110

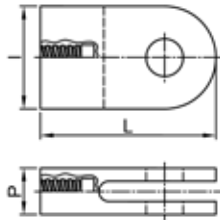
Ø [mm]	Weight [kg]	I1 [mm]	L1 [mm]	I2 [mm]	L2 [mm]
40L	29.35	120	800	310	480
50L	57.60	140	1000	410	585
57L	54.80	140	1000	400	540
63L	92.80	180	1100	435	670
75L	105.00	180	1250	485	680

# Marine Tie 670/800

## Sheet Pile Anchorage - Inclined Design



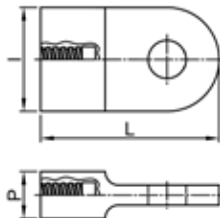
### Fork Piece



### R4000

Ø [mm]	Weight [kg]	L [mm]	I [mm]	P [mm]
35R	13.70	140	305	65
43R	40.40	190	400	90
50R	39.90	185	470	90
57R	66.00	120	470	120
63R	74.00	160	495	120
75R	123.50	300	575	150

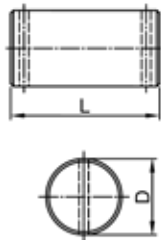
### Eye Piece



### R4100

Ø [mm]	Weight [kg]	L [mm]	I [mm]	P [mm]
35R	12.30	140	310	65
43R	36.20	190	405	90
50R	37.90	185	475	90
57R	55.70	230	475	120
63R	67.50	260	505	120
75R	114.20	300	585	150

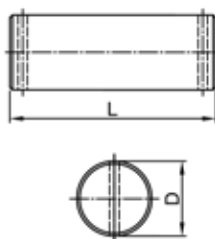
### Bolt Eye Piece



### R4200

Ø [mm]	Weight [kg]	D [mm]	L [mm]
35R	1.70	50	115
43R	3.64	65	145
50R	4.40	70	150
57R	6.93	80	180
63R	9.20	90	190
75R	14.95	105	225

### Bolt T-Plates Eye Piece

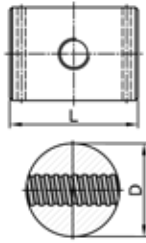


### R4220

Ø [mm]	Weight [kg]	D [mm]	L [mm]
35R	2.17	50	145
43R	5.07	65	200
50R	5.14	70	175
57R	9.30	80	240
63R	11.70	90	240
75R	17.34	105	260

## Marine Tie 670/800 continued...

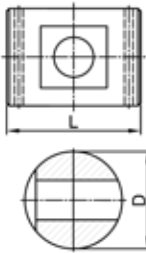
### Joint Nut



#### R4230

Ø [mm]	Weight [kg]	D [mm]	L [mm]
35R	11.80	110	170
43R	22.50	140	200
50R	31.90	160	220
57R	33.20	160	230
63R	49.20	190	240
75R	67.60	200	300

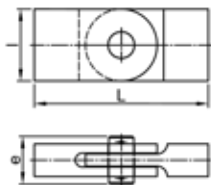
### Joint Bolt



#### R4240

Ø [mm]	Weight [kg]	D [mm]	L [mm]
35R	10.50	110	170
43R	20.54	140	200
50R	29.80	160	220
57R	29.80	160	230
63R	44.50	190	240
75R	61.30	200	300

### Clevis

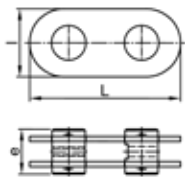


#### R4300

Ø [mm]	Weight [kg]	L [mm]	I [mm]	e [mm]
32R	27.80	4485	140	115
40R	80.30	585	190	145
50R	81.30	705	185	150
57R	129.00	675	230	180
63R	151.50	700	260	190
75R	258.00	810	300	225

## Marine Tie 670/800 continued...

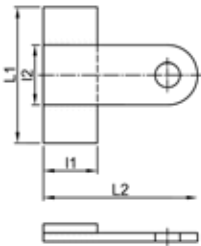
### Hinged Joint



### R4330

Ø [mm]	Weight [kg]	L [mm]	I [mm]	e [mm]
32R	60.50	680	285	170
40R	123.10	850	360	200
50R	151.20	860	410	220
57R	194.70	980	410	230
63R	278.00	1160	485	240
75R	422.50	1250	510	300

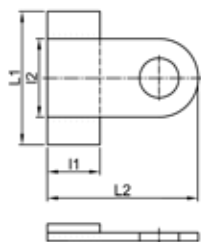
### T-Plate Eye Pieces



### R5100

Ø [mm]	Weight [kg]	I1 [mm]	L1 [mm]	I2 [mm]	L2 [mm]
35R	12.50	120	370	140	390
43R	26.50	140	540	190	460
50R	28.80	170	480	185	510
57R	51.30	180	625	230	550
63R	59.10	200	700	260	600
75R	103.00	250	775	300	700

### T-Plate Joint Nut



### R5110

Ø [mm]	Weight [kg]	I1 [mm]	L1 [mm]	I2 [mm]	L2 [mm]
35R	26.30	120	720	285	460
43R	51.60	140	950	360	540
50R	67.10	170	1050	410	615
57R	83.70	180	1000	410	635
63R	114.60	200	1250	485	725
75R	185.00	250	1350	510	805



# Contact with the mill

## Europe

---

**Liberty Commercial Czech Republic k.s.**  
Vratimovská 689/117, 719 00 Ostrava (CZ)

**ID:** 05433266

**VAT:** CZ05433266

**E:** sales.ostrava@libertysteelgroup.com

**T:** +420 595 687 787

**www.libertyostrava.cz**

---

**Liberty Commercial Germany GmbH**  
Am Brüll 17, 40878 Ratingen (DE)

**Liberty Commercial PL Sp. z o.o.**  
ul. Francuska nr. 36, 40-506 Katowice (PL)

For further information visit [www.libertysteelgroup.com](http://www.libertysteelgroup.com)

