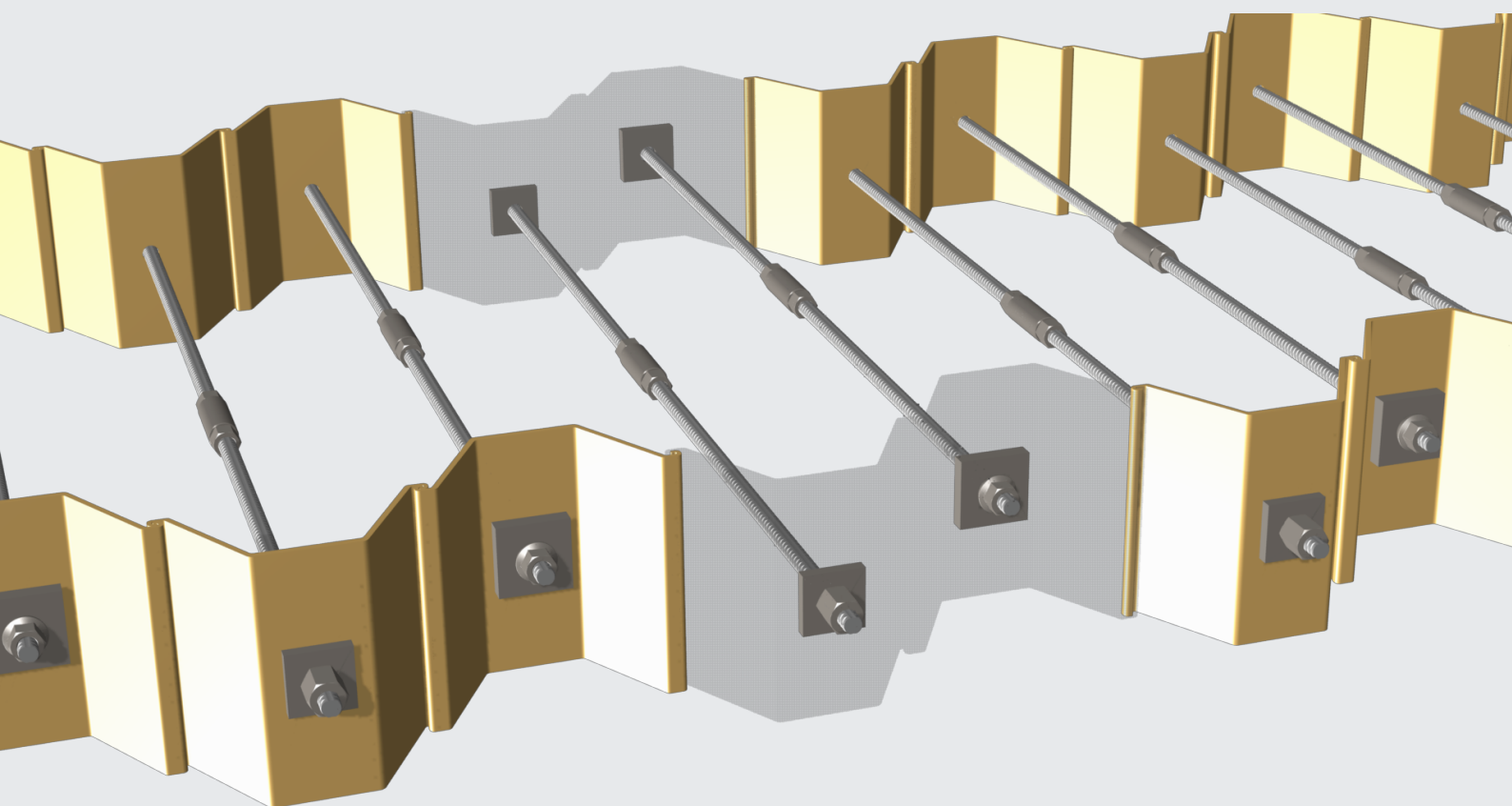


Accessories for Marine Tie



LIBERTY Ostrava
www.libertysteelgroup.com



MEMBER OF



LIBERTY Ostrava is an integrated steel business with an annual production capacity of approximately 3.6 million tonnes serving construction, machinery and oil & gas industries.

The company is a domestic leader in the manufacturing of road barriers and tubes. In addition to the Czech market, it supplies its products to more than 40 countries around the world. Together with its subsidiaries in Ostrava, the company has 6,000 employees. The company

manufactures its products with a minimum possible environmental footprint. It is part of LIBERTY Steel Group, which is part of GFG Alliance, a collection of global businesses and investments owned by Sanjeev Gupta and his family. The Alliance is structured into three core industrial pillars: LIBERTY Steel Group, ALVANCE Aluminium Group and SIMEC Energy Group. Headquartered in London, GFG Alliance employs 35,000 people, across 10 countries and has revenues of USD \$20bn.

Liberty Ostrava Facilities

- 3 coke oven batteries
- 5 sinter belts
- 3 blast furnaces
- 4 tandem furnaces
- 3 continuous casting machines
- 6 rolling mills (incl. hot-strip mill, big and small Stiefel pipe mills, wire rod mill, heavy section mill, fine & medium section mill)
- Mine support and road barrier lines

Main Products

Hot rolled coils, sheets and strips, road barriers, merchant bars and sections, wire rods, tubular steels, mine supports, engineering products, transformer cores, thread bars, rebars

Key Markets

Construction, machinery and automotive

Certification

ISO 9001

ISO 14001

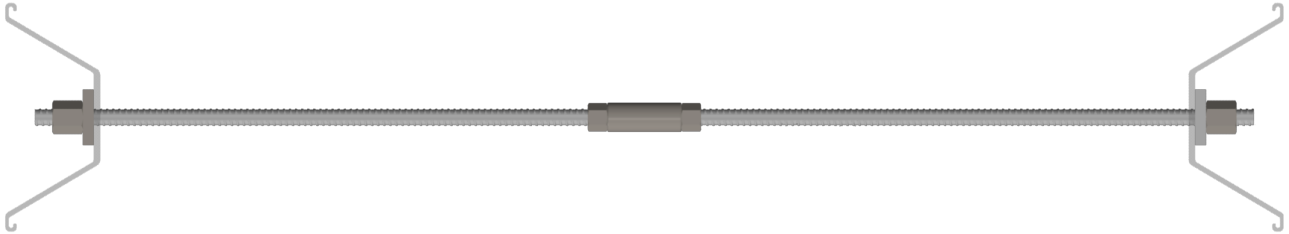
OHSAS 18001

ISO 50001



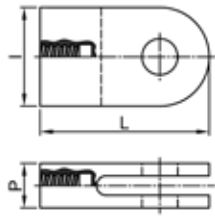
Marine Tie 500/550 - 550/620

Sheet Pile Anchorage - Standard Design



Fork Piece

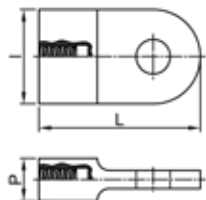
L4000



Ø [mm]	Weight [kg]	l [mm]	L [mm]	P [mm]
40L	13.60	140	305	65
50L	39.70	190	445	90
57L	44.60	210	435	100
63L	66.00	230	470	120
75L	94.80	260	510	140

Eye Piece

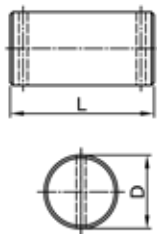
L4100



Ø [mm]	Weight [kg]	l [mm]	L [mm]	P [mm]
40L	12.30	140	310	65
50L	36.60	190	450	90
57L	39.50	210	440	100
63L	55.70	230	475	120
75L	77.60	260	525	140

Bolt Eye Piece

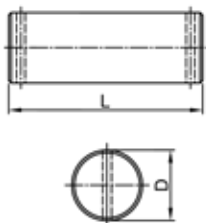
L4200



Ø [mm]	Weight [kg]	D [mm]	L [mm]
40L	1.70	50	115
50L	3.64	65	145
57L	5.20	75	155
63L	6.93	80	180
75L	10.30	90	210

Bolt T-Plates Eye Piece

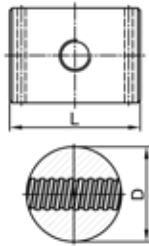
L4220



Ø [mm]	Weight [kg]	D [mm]	L [mm]
40L	2.17	50	145
50L	5.07	65	200
57L	5.73	75	170
63L	9.30	80	240
75L	11.05	90	225

Marine Tie 500/550 - 550/620 continued...

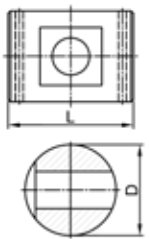
Joint Nut



L4230

Ø [mm]	Weight [kg]	D [mm]	L [mm]
32L	7.30	90	160
40L	13.80	120	170
50L	28.80	160	200
57L	23.80	140	220
63L	33.20	170	230
75L	50.40	180	280

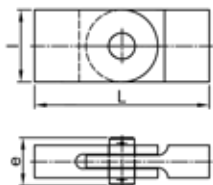
Joint Bolt



L4240

Ø [mm]	Weight [kg]	D [mm]	L [mm]
32L	6.60	90	160
40L	12.60	120	170
50L	26.70	160	200
57L	20.70	140	220
63L	33.00	170	230
75L	44.20	180	280

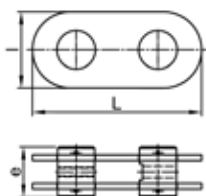
Clevis



L4300

Ø [mm]	Weight [kg]	L [mm]	l [mm]	e [mm]
40L	27.50	445	140	115
50L	79.00	675	190	145
57L	89.30	625	210	155
63L	129.00	675	230	180
75L	182.80	735	260	210

Hinged Joint



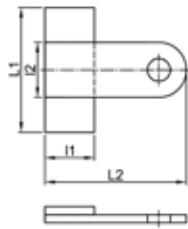
L4320

Ø [mm]	Weight [kg]	L [mm]	l [mm]	e [mm]
32L	32.10	500	235	160
40L	69.40	710	310	170
50L	156.00	950	410	200
57L	125.00	780	400	220
63L	234.00	1130	435	230
75L	260.00	1040	485	280

Marine Tie 500/550 - 550/620 continued...

T-Plate for Eye Piece

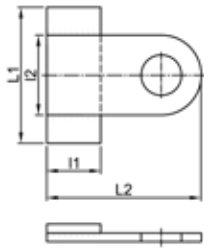
L5100



Ø [mm]	Weight [kg]	I1 [mm]	L1 [mm]	I2 [mm]	L2 [mm]
40L	12.50	120	370	140	390
50L	26.50	140	540	190	460
57L	28.90	140	550	210	490
63L	51.30	180	625	230	550
75L	54.00	180	680	260	580

T-Plate for Joint Nut

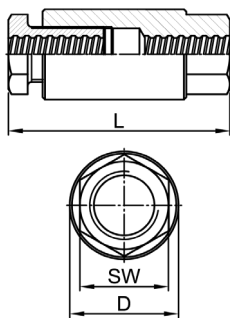
L5110



Ø [mm]	Weight [kg]	I1 [mm]	L1 [mm]	I2 [mm]	L2 [mm]
32L	15.03	100	700	235	400
40L	29.35	120	800	310	480
50L	57.60	140	1000	410	585
57L	54.80	140	1000	400	540
63L	92.80	180	1100	435	670
75L	105.00	180	1250	485	680

Turnbuckle

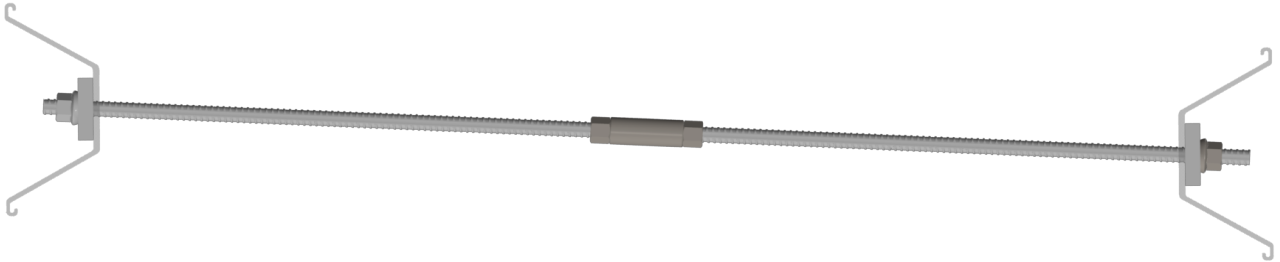
L3105



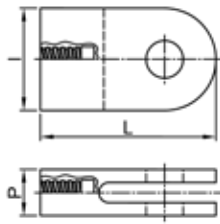
Ø [mm]	Weight [kg]	SW [mm]	L [mm]	D [mm]
32L	3.60	60	225	-
40L	6.60	80	270	-
50L	14.30	100	305	-
57L	20.70	100	340	127
63L	22.00	100	390	127
75L	26.22	110	375	140

Marine Tie 670/800

Sheet Pile Anchorage - Inclined Design



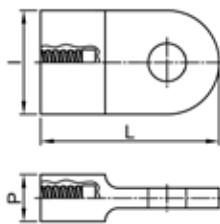
Fork Piece



R4000

Ø [mm]	Weight [kg]	l [mm]	L [mm]	P [mm]
35R	13.70	140	305	65
43R	40.40	190	400	90
50R	39.90	185	470	90
57R	66.00	230	470	120
63R	74.00	260	495	120
75R	123.50	300	575	150

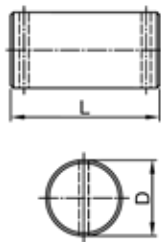
Eye Piece



R4100

Ø [mm]	Weight [kg]	l [mm]	L [mm]	P [mm]
35R	12.30	140	310	65
43R	36.20	190	405	90
50R	37.90	185	475	90
57R	55.70	230	475	120
63R	67.50	260	505	120
75R	114.20	300	585	150

Bolt Eye Piece

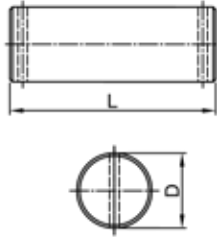


R4200

Ø [mm]	Weight [kg]	D [mm]	L [mm]
35R	1.70	50	115
43R	3.64	65	145
50R	4.40	70	150
57R	6.93	80	180
63R	9.20	90	190
75R	14.95	105	225

Marine Tie 670/800 continued...

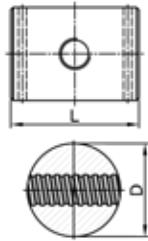
Bolt T-Plates Eye Piece



R4220

Ø [mm]	Weight [kg]	D [mm]	L [mm]
35R	2.17	50	145
43R	5.07	65	200
50R	5.14	70	175
57R	9.30	80	240
63R	11.70	90	240
75R	17.34	105	260

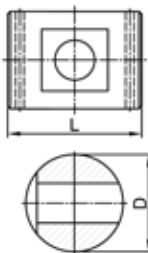
Joint Nut



R4230

Ø [mm]	Weight [kg]	D [mm]	L [mm]
35R	11.80	110	170
43R	22.50	140	200
50R	31.90	160	220
57R	33.20	160	230
63R	49.20	190	240
75R	67.60	200	300

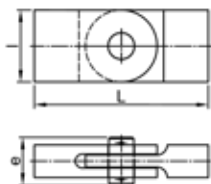
Joint Bolt



R4240

Ø [mm]	Weight [kg]	D [mm]	L [mm]
35R	10.50	110	170
43R	20.54	140	200
50R	29.80	160	220
57R	29.80	160	230
63R	44.50	190	240
75R	61.30	200	300

Clevis

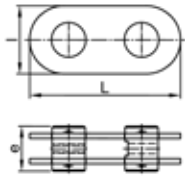


R4300

Ø [mm]	Weight [kg]	L [mm]	l [mm]	e [mm]
32R	27.80	445	140	115
43R	80.30	585	190	145
50R	81.30	705	185	150
57R	129.00	675	230	180
63R	151.50	700	260	190
75R	258.00	810	300	225

Marine Tie 670/800 continued...

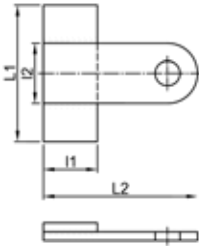
Hinged Joint



R4320

Ø [mm]	Weight [kg]	L [mm]	l [mm]	e [mm]
32R	60.50	680	285	170
40R	123.10	850	360	200
50R	151.20	860	410	220
57R	194.70	980	410	230
63R	278.00	1160	485	240
75R	422.50	1250	510	300

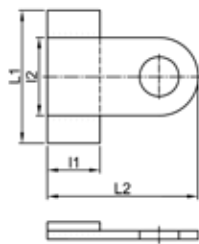
T-Plate for Eye Piece



R5100

Ø [mm]	Weight [kg]	l1 [mm]	L1 [mm]	l2 [mm]	L2 [mm]
35R	12.50	120	370	140	390
43R	26.50	140	540	190	460
50R	28.80	170	480	185	510
57R	51.30	180	625	230	550
63R	59.10	200	700	260	600
75R	103.00	250	775	300	700

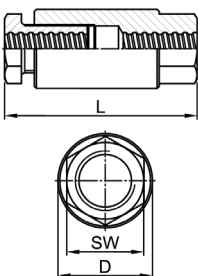
T-Plate for Joint Nut



R5110

Ø [mm]	Weight [kg]	l1 [mm]	L1 [mm]	l2 [mm]	L2 [mm]
35R	26.30	120	720	285	460
43R	51.60	140	950	360	540
50R	67.10	170	1050	410	615
57R	83.70	180	1000	410	635
63R	114.60	200	1250	485	725
75R	185.00	250	1350	510	805

Turnbuckle



R3105

Ø [mm]	Weight [kg]	SW [mm]	L [mm]	D [mm]
35R	8.90	80	275	-
43R	13.90	90	330	-
50R	16.77	100	350	-
57R	24.00	100	390	127
63R	25.50	100	405	133
75R	29.40	110	405	140

Contact with the mill

Czech Republic and Other Countries

Liberty Commercial Czech Republic k.s.

Vratimovská 689/117, 719 00 Ostrava (CZ)

ID: 05433266

VAT: CZ05433266

E: sales.ostrava@libertysteelgroup.com

T: +420 595 687 787

www.libertyostrava.cz

Germany

Liberty Commercial Germany GmbH

Am Brüll 17, 40878 Ratingen (DE)

E: matthias.scheibe@libertysteelgroup.com

T: +49 162 42 78 799

Poland

Liberty Commercial PL Sp. z o. o.

Francuska 36, 3rd floor, 40-506 Katowice (PL)

E: lcpl.biuro@libertysteelgroup.com

T: +48 32 661 98 90

For further information visit www.libertysteelgroup.com

Revision: January 2023

